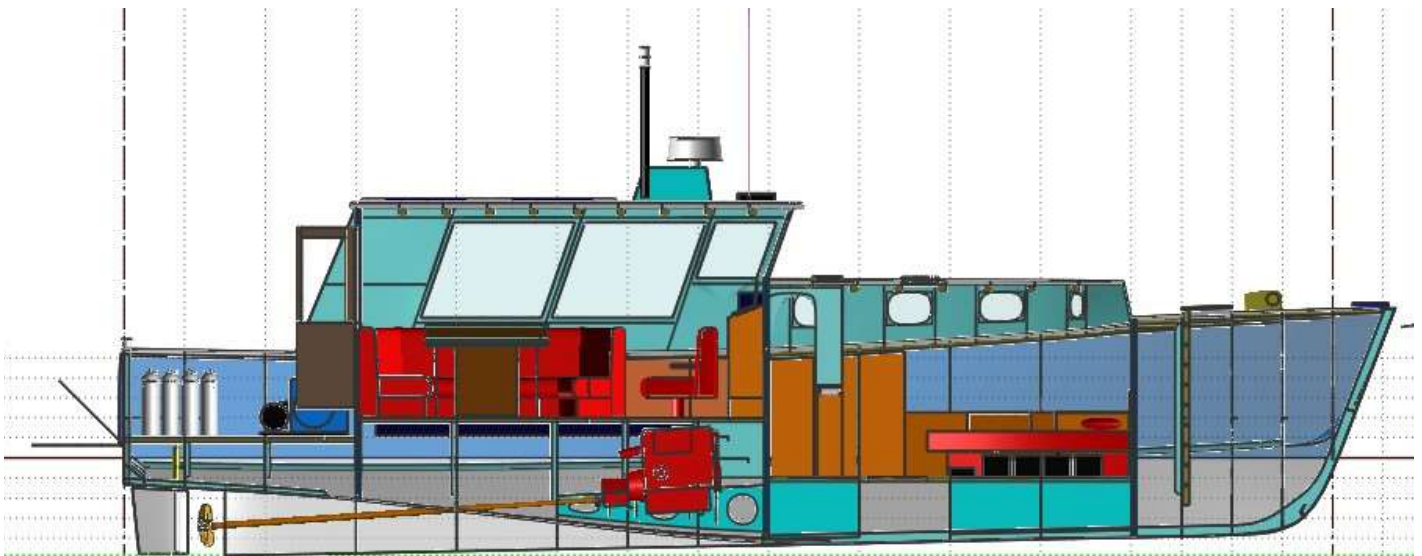
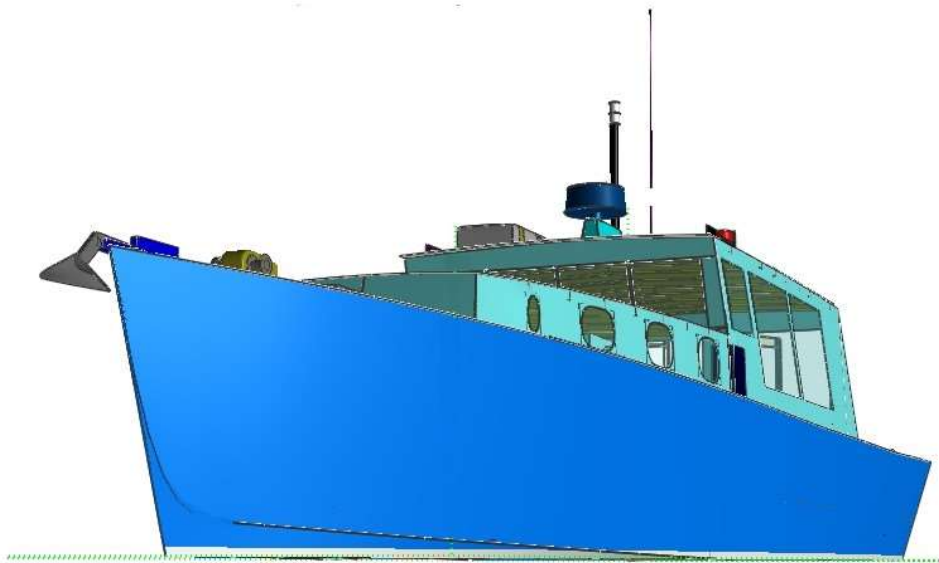


# BARBAROY Boats, Engineering and All

---

Copywrite ©2023 by BoatPlansByJohn.

## GENTLEMAN'S LAUNCH



# BARBAROY Boats, Engineering and All

---

## GENTLEMAN'S LAUNCH

### Background

This launch was designed for Mr Frederick N\_, a discriminating gentleman who specified his requirements in refreshingly priority order:

- #1 Accommodation for 2 persons with double bed (or larger) and an en suite style head/shower;
- #2 "Comfortable" deck space and saloon for living and entertaining;
- #3 Dive compressor and sufficient tanks for 4 persons x 2 dives per day;
- #4 "Austerity" accommodation for 2 persons additional to those of #1;
- #5 Range ~ 1200 nautical miles;
- #6 Robust construction, moderate displacement, length ~ 40 ft, speed ~ 8-10 knots, etc etc, and
- #7 "Green".

#1 was specified mandatory, the remainder negotiable.

### Principal Particulars

Length OA	12.5	m
Length WL	12.0	m
Beam	4.05	m
Draught	1.00	m
Displacement	13.4	tonnes
normal deep /	13.9	tonnes overload

Installed Power	60 kw (80 hp)
Maximum Speed	8.5 knots
@100% (60kw)	
Cruise	8 knots
@85% (45 kw)	
Economical	7 knots
@35% (21 kw)	

Fuel	430 L + 550 L in
	Extended Range tank
Range	640 nautical miles at 8 knots
	1200 nautical miles at 7 knots

Solar Panels	4x 120 Watt	Fresh Water	~ 360 L
Battery	4 x12 V 300 Ah	Holding Tank	~ 60 L



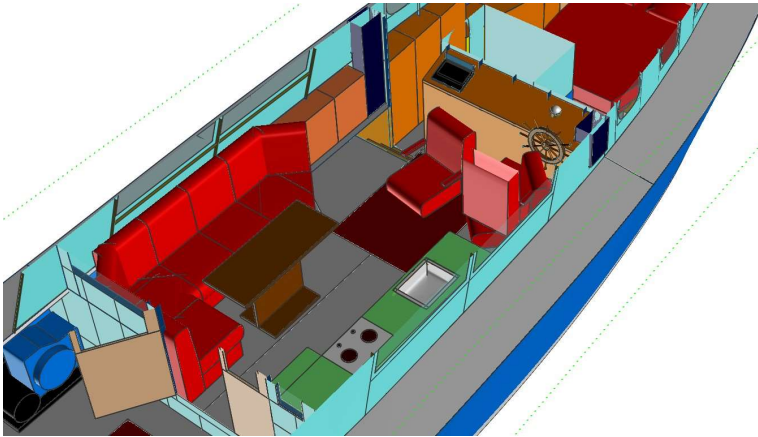
### Arrangement

**B B E & A**

## BARBAROY Boats, Engineering and All

---

At the stern is a large quarter deck ~ 2.6 m x 2.2 m. Water access is via a hinged stern door / swim platform, and the area is used for diving preparation as well as an extension to the saloon when entertaining. In the starboard aft corner is an INFLAM locker for the LPG/CNG/other gas bottles and other inflammable materials (eg. petrol, pyrotechnics etc). This vents outboard only to ensure that dangerous gases cannot enter the ship. Dive compressor and tanks are located to Port, generally under the line of the main deck.

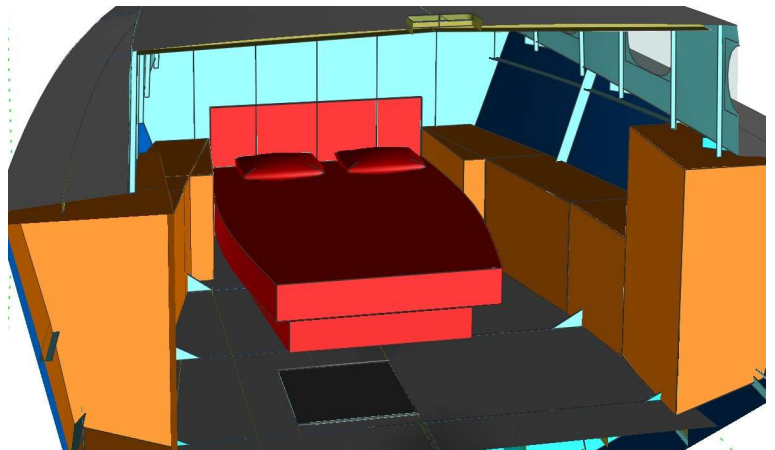


The saloon is large and airy, being ~ 3.4 m x 2.8 m. To port a set of modular settees is configured around a table, and these can be reconfigured temporarily to form a generous double bed, so providing the “austerity accommodation” required by Mr N\_\_. The galley is to starboard, with fridge, sink, stove, (microwave) oven *et.al.* A “flo-thru” HWS is located in the galley cabinetry to serve the galley and shower.

The forward part of the saloon contains the Command Console with all the navigation instruments selected by the owner – compass, radar, echo sounder, GPS, chart plotter, laptop etc. etc. The Skipper’s seat is to Starboard and the Mate’s on the Centreline: both are swivel chairs adjustable in height so become part of the Saloon furniture when the ship is not underway.

Forward of the saloon, down 3 steps and along a short passage is a comfortable cabin of ~ 3 m x 3.2 m. The bed (Requirement #1) is the major feature here but there is adequate cabinetry for an extended stay on board. The shower addresses the cabin directly, while the head is off the passage, so being available for guests without them disturbing any ... ah ... activity ... in the cabin.

The fore peak is large and is accessed from the main deck. It contains the cable locker and all bo’sun’s stores (ropes, fenders etc) while having space for other “stuff” that the owner may wish to carry.

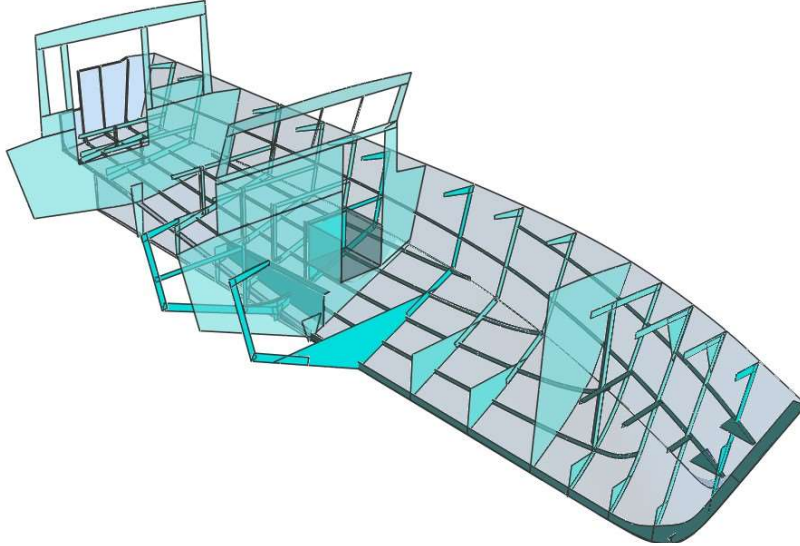


### Construction

## BARBAROY Boats, Engineering and All

---

The hull is of conventional displacement form, robustly built in steel using conical and flat sections wherever possible. Hull plating is 5 mm with lighter plating used on the deckhouse. Most framing is 5mm (3/16") with heavier angle sections used in the deckheads of the saloon and cabin, and as pillars when required.

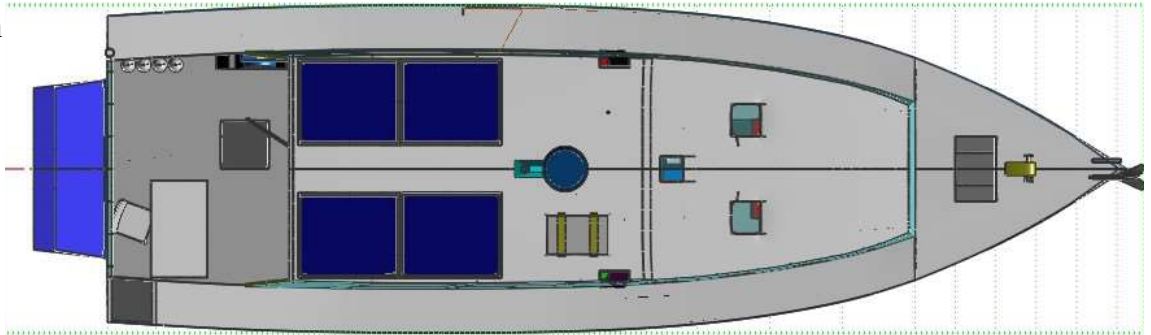


### Engineering

Propulsion is by a single diesel engine of 60 kW (80HP) driving a 4 bladed B4.55 type propeller with diameter of 550 mm and pitch of 510 mm. The predicted speed is 8.5 knots at full power

and 8 knots at 75% full power. This modest speed and power is in keeping with Requirement #7, "green".

Also to meet the "Green" requirement, the prime electrical generating plant is solar: 4 x 120 Watt panels. This is backed up by a generator driven from the main engine, although a separate 2400 watt DG could be fitted in the Engine Room



or on the Quarter Deck. Four 12Volt 300Watt batteries and two 2200kw Inverters are located under the berth in the cabin where they may be maintained easily. Switchboards for 24 Volt and 240 Volt systems are located in the Command Console.

### Other

Stability exceeds IMO requirements, so variations with a flying bridge above the saloon would be possible.

### Build Pack

**B B E & A**

# BARBAROY Boats, Engineering and All

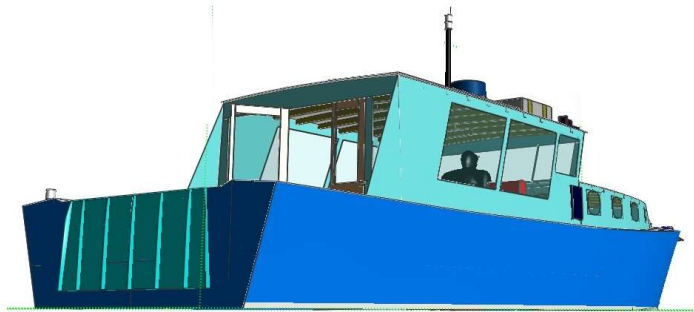
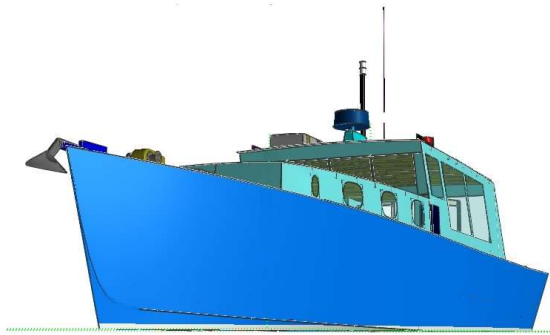
---

The Build Pack comprises 44 - A4 sheets of drawings, spreadsheets and explanatory notes. These are to be read together to build the ship.

***LOFTING REQUIRED !***

This ship is ready to build.

Design prepared using DELFTship Maritime Software.



Copywrite ©2023 by BoatPlansByJohn.

**B B E & A**